

---

# Bluewater Yacht for Sale

**Motiva 39 S deck saloon and live-a-board yacht**  
**Well equipped & ready to go for circumnavigation**

---



## Key Features

- Strong and secure steel yacht built by the danish boatyard Motiva
- 12 m (39') center cockpit sloop with many safety features, launched 1994
- Well equipped for bluewater sailing or circumnavigation in major refit 2015-2017
- Proofed herself vital in whole gale force winds and crossing several oceans
- Well designed for living on board, deck saloon yacht with second helm inside
- Strong marinized industry Ford engine with well designed fueling system
- Lots of storage, spares and tools
- Sold by second owner, ready to go for voyaging
- We are living on board since 2017 and will be returning to Germany at the end of our 2 years sabbatical
- Current location is Indonesia, traveling towards Malaysia

## Price

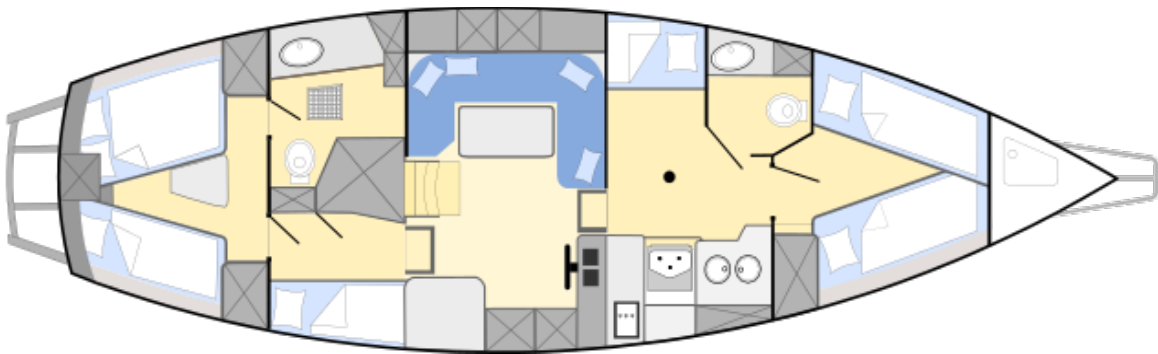
- 129.000 Euros, including all equipment and features as posted
- EU Tax is paid.



## Boatdesign

- Sloop, centre cockpit
- Steel hull fully insulated
- Strong rigging
- Long keel, rudder protected by skeg
- Length overall: 13.34 m
- Length over deck: 11.99 m

- Breadth: 3.9 m
- Draft: 1.9 m
- Tonnage: 19 t
- 2 cabins, deck saloon, pantry, engine room (below deck saloon) and 2 bathrooms
- 6 berths, 2 in the masters cabin, 2 in the front cabin and 1 besides navigation for watches, 1 on the way to the front cabin
- 2 helms enabling steering from inside and outside
- Lots of storage in lockers, below sofa and beds including a heated locker plus huge storage in the bilge and engine room



---

## Boat history

- **1994: Launch.**
  - Hull build by danish boatyard Motiva.
  - Interior owner designed and built from 1989-1994 in Germany.
  - Construction and all on board systems are well documented.
  - Yacht launched 1994 in Germany.
- **2011: Major refit.**
  - Genoa new
  - Main sail new
  - Hull painting new
  - Upholstery saloon
- **2014: Sold in Germany from first owner.**
- **2015-2017: Major refit.** Rigging & Bluewater equipment for a total value of more than 30 000€ installed (most invoices available upon request)
  - Stays and shrouds replaced, all new 2015
  - Mast steps new 2015
  - Sheets & mooring lines new 2015
  - Watermaker new 2017
  - AIS transponder & AIS watchbox new 2015
  - SSB radio new 2015
  - Solar panels new 2015
  - Wind generator new 2015
  - AIS man over board system, new 2015
  - Sat phone, new 2017
  - Life raft, new 2015
  - Wifi antenna and WLAN on board system, new 2015
  - Wind vane, new 2015
  - Bord computer, new 2015
  - Delta anchor, new 2017
  - Binimi Top, new 2017
  - Bathing ladder, new 2017
  - Safety netting, new 2015
  - Standup Paddle Board, new 2017
  - Sextant, new 2017
  - EPRIB, new 2015
  - Major Engine inspection 2017



- **Since September 2017: Live-a-board yacht.**
- **Additional items installed while traveling:**
  - Antifouling new 2018
  - Service batteries new 2018
  - Cockpit cushions, new 2018
  - UV protection genoa new 2018
  - Inverter and transformer, new 2018
- **Travel history:** Baltic Sea, Northern Sea, North Atlantic Ocean, Atlantic Crossing, Caribbean Sea, Pacific Crossing, North Pacific Ocean, South Pacific Ocean, Coral Sea, Salomon Sea, Indian Ocean
- **Current location:** Indonesia, traveling towards Malaysia

## Rigging & mast installations

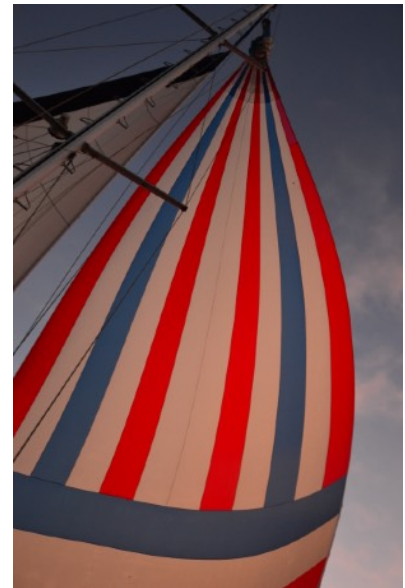


- Strong aluminium Mast, 16 m height, fully accessible
- Mast steps (new 2015)
- 2 backstays 8 mm each (new 2015)
- Shrouds 8 mm each (new 2015)
- Forestay 10 mm (new 2011) and cutter stay
- 3 self tailing winches at the mast
- 4 strong self tailing winches in the cockpit (Enkes ASC28)
- 4 rigged halyards
- Solid aluminium rod kicker
- Aluminium boom
- 2 spinnaker poles (one telescope, one fixed)
- LED Navigation lights plus stroke in the mast top
- Electric signal horn installed at the mast, remote controlled
- Manual windex in the masttop (new 2015)
- VHF & AIS antenna in the masttop

---

## Sails

- Mainsail, battened, 3 reefs, 40 qm, heavy cloth (new 2011)
- Lazy jacks (new 2018)
- Mainsail cover
- Mainsheet and traveller at the backside of the cockpit
- Roller furlled for genoa, 58 qm, heavy cloth (new 2011, UV protection new 2018)
- Jib, 29 qm
- Stormjib, 8 qm
- Cruising chute, 96 qm
- Whole ship cover for winter storage
- Sun sail for boom rigging
- Spares: Full length longest stay including terminals, several spare halyards and sheets (all new), blocks, toggles, pins ...



## Deck installations



- Steel deck with anti slippery patches
- 4 welded bits
- Several strong cleats
- Solid welded sea fence
- Safety netting (new 2015)
- 2 fender balls, 6 fenders, 1 fender step (2 new 2015)
- Bathing platform with 3 step telescope niro ladder (new 2017) at the stern
- Fishing rot holder (new 2017)
- Sprayhood (re-worked 2018)
- Bimini Top (new 2017)
- portable pump for deck cleaning (new 2017)
- small removable cockpit table
- Teak cockpit
- Cockpit cushions (new 2018)





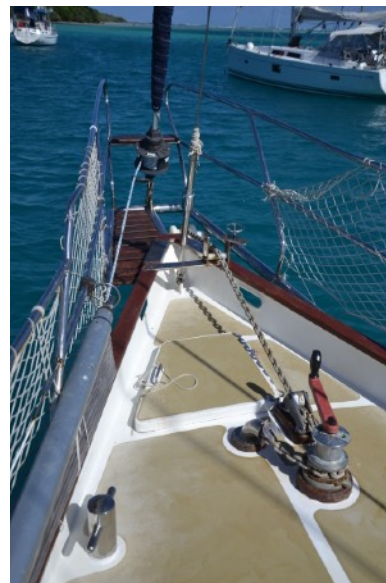
---

## Dingy

- Zodiak Dingy, anchor & oars
- Yamaha Malta outboard engine 2.5 hp, two stroke
- Niro davits
- Spares: Dingi repair kit, spark plugs

## Anchoring equipment

- **Primary Anchor:** 35 kg CQR anchor, 50 m, 10 mm anchor chain plus 20 m anchor rope for extension, extra chain to attach secondary anchor to primary chain
- **Secondary Anchor:** 16 kg Delta anchor, 20 m, 8 mm anchor chain (new 2017)
- Sea Anchor (new 2015, never used)
- Strong electric Simpson Lawrence Anchorman Power Windlass
- Strong bearings for safe anchoring in heavy winds



## Gas system

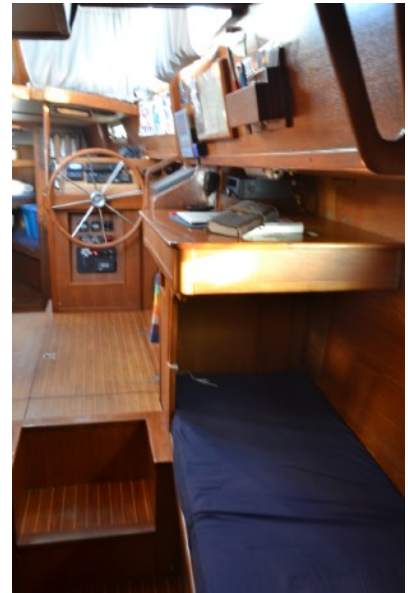
- 2 propane 5kg gas bottles including adapters (stored in the anchor box)
- Liquid pressurised gas (LPG) including remote magnetic valve
- Copper tubes connecting bottles and pantry
- 

## Navigation

- Raymarine ST7000 electrical autopilot
- Windpilot Pacific wind vane (new 2015)
- Raymarine Log, wind meter, Heading ST50 (installed in the cockpit)
- Northstar echo D310 (installed in the cockpit)
- Raymarine VMG, Multi, Heading ST50 (installed inside)
- Forward looking sounder Echopilot
- Silva compass
- Furuno GP32 GPS



- Garmin portable GPS
- Raytheon Radar R11xx
- Raspberry Pi board computer (new 2015)
- C-map charts worldwide (status 2006), Open CPN
- Weatherdock AIS easyTRX-IS-WiFi system including wifi and secondary independent GPS (new 2015)
- Weatherdock watch box, collision warning (new 2015)
- Navtex Fastnet radio, Marine decoder
- Barometer, Thermometer, Hydrometer
- Wempe Meteograph
- Davis Mark25 Sextant (new 2017)
- Navigation Table
- Courtesy flags for 20+ countries plus full flag alphabet
- Radar reflector and mooring ball
- Binoculars
- Spares: Raspberry Pi spare computer, autopilot spares



---

## Communication

- Sailor A1 VHF radio
- Handheld VHF radio (new 2017)
- Alphatec Wifi repeater including 90 cm wifi antenna and router (new 2015)
- Yeasu SSB radio FT450D, including SSB antenna and tuner Yaesu FC40 and MicroHam Interface USB iii (new 2015)
- Inmarsat Isatphone 2 (new 2017)

## Safety

- EPRIB ocean signal (new 2015)
- 4 Weatherdock easyOne MOB AIS transponder (new 2015)
- self inflating life jackets for adults
- solid life jackets for children (new 2015)
- Lifelines (partially new 2015)
- Lifesling
- Horseshoe Lifering
- Buoy with light
- Emergency bag
- Flares (partially new 2017)
- 3 fire extinguishers
- First Aid medical kit & extensive board pharmacy (partially new 2015-17)
- Plastimo, Transocean Liferaft, 6 Persons (new 2015)
- Safety netting, new 2015
- Spares: cartridges for life jackets

## Power management



- 12V based board system with several outlets plus 220V outlets for land supply
- 2 control panels for power management
- Ammeter and Ah-Meter for monitoring of power consumption
- 170 Watt installed solar panels (new 2015)
- Silent Wind generator 400 plus (new 2015)
- 2 alternators 50A (engine and service)
- LEAB current distributor
- Charge controller for batteries
- Charging controller for wind and solar power (new 2015)
- Engine battery 135 Ah
- 3 Trojan AGM Service batteries 3 x 89 Ah (new 2018)
- 220V / 250W Inverter
- 110V / 1600W Inverter (new 2018)
- 110V / 220W Transformer (new 2018)
- Navigation lights and majority of interior lights LED
- 50 m cable and various adaptors for power supply from land
- Spares: switches, bulbs, batteries, cables

## Engine & Fuel

- Ford 2722 C-Power Marine Engine (marinized industry engine), fully insulated and easy accessible from engine room and deck saloon (major inspection 2017: heat exchanger, impeller, v/belt, thermostat)
- 66 kw, 90 PS
- Engine hours: 4500 hr, life expectancy: 15000 hr
- 750 liter keel diesel tank
- 40 liter day diesel tank, gravity flow to engine
- 2 independent fuel pumps constantly circulating and filtering fuel from keel tank to day tank preventing diesel pests for maximum engine reliability
- additional SEPAR filter between day diesel tank and engine
- Spares: 1 fuel pump, oil filters, fuel filters, v-belts, impellers, thermostat





---

## Heating

- Eberspaecher Airtronic diesel heater, outlets in each cabin plus heated locker
- Secondary Heating using engine heat

## Water



- 12 separable Niro Water Tanks 2 x 280 liter, inside accessible
- 50 liter water heater (engine heat or 220 V power)
- 175 liter holding tank, gravity flow, including monitoring system
- In each bathroom: tap and basin and a fresh water vacuum toilet
- Watermaker ECH2OTec 260 DML 1; 60 liter/h including remineralisation and possibility for bottle filling (new 2017)
- pressurized fresh water system
- 2 electric bilge pumps (one new 2017)
- Shower in masters bathroom and usage in cockpit (electric drainage new 2015)
- Hose and adaptors for land water supply, jerry cans
- Spares: toilet spares, hose, gaskets, filters & maintenance kit for watermaker, manual bilge pump



---

## Pantry

- ENO 2 flame stove plus oven
- 70 liter top loading fridge
- Tap (new 2017) and 2 niro water basins
- Pressure cooker, pan and pots (partially new 2015)
- Glasses, Cups and dishes (new 2015)
- Silverware, baking & cooking equipment (partially new 2015)
- Lots of storage especially in bilge



## Deck saloon, Cabins & Storage



- Many windows for good visibility and daylight especially in deck saloon
- Teak based interior
- Teak floors



- Lots of storage especially in engine room and beneath deck saloon. Additional storage below beds and sofa and in lockers
- Large heatable wardrobe
- Adjustable teak eating table
- Sofa (cushions new 2010) and 2 removable bar chairs
- Radio, speakers in and outside
- Bibliography incl. cruising guides and nautical literature
- Mosquito nets (new 2015-18)
- Blankets and sheets (new 2015)





---

## Tools & Spares

- Antifouling painting & anodes
- Paintings
- Large assortment of tools such as grinders, drills, Fein Multitool, Disc grinder...
- Assortment of electronic tools
- Assortment of mechanic tools
- Assortment of screws
- Many spares available on board

## Misc

- Snorkeling gear (new 2015-18)
- Stand up paddle board (new 2017)
- Fishing equipment (new 2015-18)
- Portable vacuum cleaner
- Manual washing machine (new 2015)