
Bluewater Yacht for Sale

Motiva 39 S deck saloon and live-a-board yacht
Well equipped & ready to go for circumnavigation



Moya brought the four of us halfway around the world. At the end of our two-year sabbatical we are now selling our bluewater decksaloon yacht, as we are returning to Germany: The steel yacht was built by the danish Boatyard Motiva and the pre-owners, she was launched 1994. In 2015-17 Moya had a major refit and was fully equipped for long distance sailing. She has proven herself as bluewater yacht on our voyage from Europe through the Atlantic and Pacific to the Indian Ocean. We have been living on board since 2017 and are currently sailing from Indonesia to Malaysia. We are selling the boat with all equipment, many tools and spare parts.

Although a 39ft ship may not seem huge, the decksaloon and the clever design of the yacht offer generous space for living on board with plenty of storage space, ideal for a family or a couple. A total of 6 berths even allowed us as a family of 4 to receive guests on board multiple times.

Moya was re-equipped with bluewater equipment 2015-17 (Watermaker, Windpilot, AIS, Mast Steps, Wind Generator, Solar Panels, Binimi Top, SSB Radio and much

more). Together with the generous tanks for water (560l) and diesel (750l) this allows for months of completely self-sufficient cruising our wonderful planet.

The steel yacht with its long keel, the protected rudder, the sea fence, the strong rigging and the installed safety equipment (liferaft, satellite phone, EPRIB, MOB transponder to name only a few) provide a solid, safe home that can easily cope with heavy weather and nasty conditions. A strong anchor windlass, sturdy anchor harness and welded cleats on board allow for safe lying at anchor and in harbor in adverse conditions. With full insulation and 2 independent heating systems, Moya is also equipped for sailing higher latitudes.



Key Features

- Strong and secure steel yacht built by the danish boatyard Motiva
- 12 m (39') center cockpit sloop with many safety features, launched 1994
- Well equipped for bluewater sailing or circumnavigation in major refit 2015-2017
- Proofed herself vital in whole gale force winds and crossing several oceans
- Well designed for living on board, deck saloon yacht with second helm inside
- Strong marinized industry Ford engine with well designed fueling system
- Lots of storage, spares and tools
- Sold by second owner, ready to go for voyaging
- We are living on board since 2017 and will be returning to Germany at the end of our 2 years sabbatical
- Current location is Indonesia, traveling towards Malaysia



Price

- 129.000 Euros, including all equipment and features as posted
- EU Tax is paid.

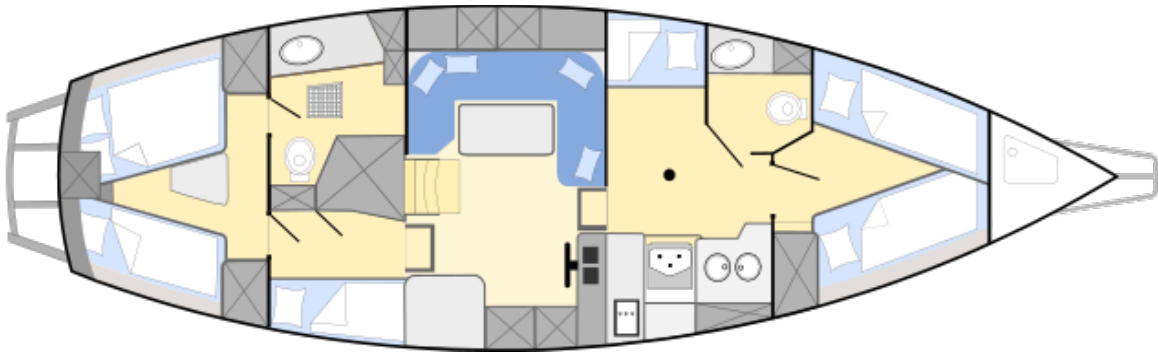
Boatdesign

- Sloop, centre cockpit
- Steel hull fully insulated
- Strong rigging
- Long keel, rudder protected by skeg
- Length overall: 13.34 m
- Length over deck: 11.99 m
- Breadth: 3.9 m
- Draft: 1.9 m
- Tonnage: 19 t
- 2 cabins, deck saloon, pantry, engine room (below deck saloon) and 2 bathrooms
- 6 berths, 2 in the masters cabin, 2 in the front cabin and 1 besides navigation for watches, 1 on the way to the front cabin
- 2 helms enabling steering from inside and



outside

- Lots of storage in lockers, below sofa and beds including a heated locker plus huge storage in the bilge and engine room



Boat history

- **1994: Launch.**
 - Hull build by danish boatyard Motiva.
 - Interior owner designed and built from 1989-1994 in Germany.
 - Construction and all on board systems are well documented.
 - Yacht launched 1994 in Germany.
- **2011: Major refit.**
 - Genoa new
 - Main sail new
 - Hull painting new

-
- Upholstery saloon
 - **2014: Sold in Germany from first owner.**
 - **2015-2017: Major refit.** Rigging & Bluewater equipment for a total value of more than 30 000€ installed (most invoices available upon request)
 - Stays and shrouds replaced, all new 2015
 - Mast steps new 2015
 - Sheets & mooring lines new 2015
 - Watermaker new 2017
 - AIS transponder & AIS watchbox new 2015
 - SSB radio new 2015
 - Solar panels new 2015
 - Wind generator new 2015
 - AIS man over board system, new 2015
 - Sat phone, new 2017
 - Life raft, new 2015
 - Wifi antenna and WLAN on board system, new 2015
 - Wind vane, new 2015
 - Bord computer, new 2015
 - Delta anchor, new 2017
 - Binimi Top, new 2017
 - Bathing ladder, new 2017
 - Safety netting, new 2015
 - Standup Paddle Board, new 2017
 - Sextant, new 2017
 - EPRIB, new 2015
 - Major Engine inspection 2017
 - **Since September 2017: Live-a-board yacht.**
 - **Additional items installed while traveling:**
 - Antifouling new 2018
 - Service batteries new 2018
 - Cockpit cushions, new 2018
 - UV protection genoa new 2018
 - Inverter and transformer, new 2018
 - **Travel history:** Baltic Sea, Northern Sea, North Atlantic Ocean, Atlantic Crossing, Caribbean Sea, Pacific Crossing, North Pacific Ocean, South Pacific Ocean, Coral Sea, Salomon Sea, Indian Ocean
 - **Current location:** Indonesia, traveling towards Malaysia

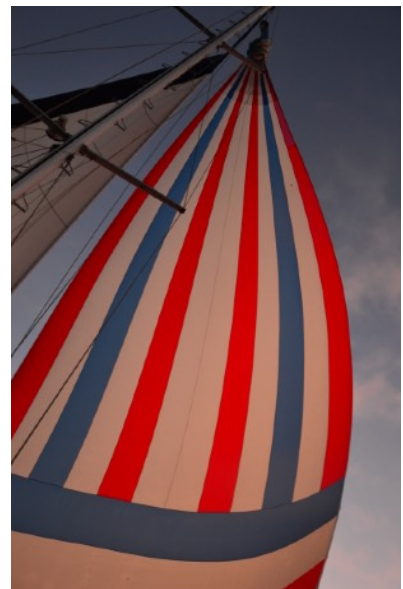
Rigging & mast installations



- Strong aluminium Mast, 16 m height, fully accessible
 - Mast steps (new 2015)
 - 2 backstays 8 mm each (new 2015)
 - Shrouds 8 mm each (new 2015)
 - Forestay 10 mm (new 2011) and cutter stay
 - 3 self tailing winches at the mast
 - 4 strong self tailing winches in the cockpit (Enkes ASC28)
 - 4 rigged halyards
 - Solid aluminium rod kicker
 - Aluminium boom
 - 2 spinnaker poles (one telescope, one fixed)
 - LED Navigation lights plus stroke in the mast top
- Electric signal horn installed at the mast, remote controlled
 - Manual windex in the masttop (new 2015)
 - VHF & AIS antenna in the masttop

Sails

- Mainsail, battened, 3 reefs, 40 qm, heavy cloth (new 2011)
- Lazy jacks (new 2018)
- Mainsail cover
- Mainsheet and traveller at the backside of the cockpit
- Roller furler for genoa, 58 qm, heavy cloth (new 2011, UV protection new 2018)
- Jib, 29 qm
- Stormjib, 8 qm
- Cruising chute, 96 qm
- Whole ship cover for winter storage
- Sun sail for boom rigging

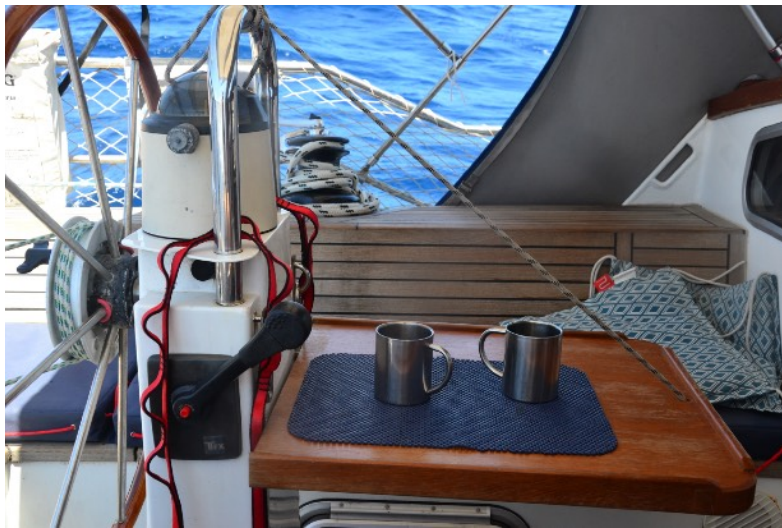


- Spares: Full length longest stay including terminals, several spare halyards and sheets (all new), blocks, toggles, pins ...

Deck installations



- Steel deck with anti slippery patches
- 4 welded bitts
- Several strong cleats
- Solid welded sea fence
- Safety netting (new 2015)
- 2 fender balls, 6 fenders, 1 fender step (2 new 2015)
- Bathing platform with 3 step telescope niro ladder (new 2017) at the stern
- Fishing rot holder (new 2017)
- Sprayhood (re-worked 2018)
- Bimini Top (new 2017)
- portable pump for deck cleaning (new 2017)
- small removable cockpit table
- Teak cockpit
- Cockpit cushions (new 2018)

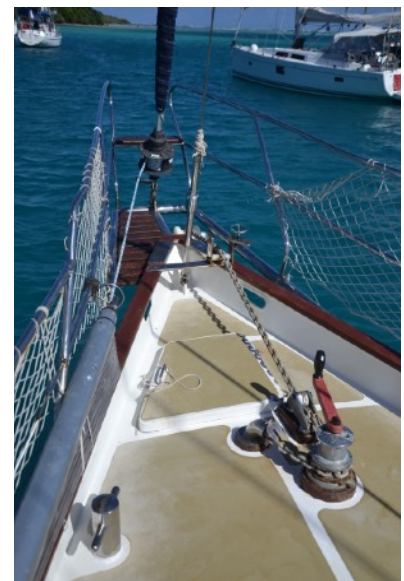


Dingy

- Zodiak Dingy, anchor & oars
- Yamaha Malta outboard engine 2.5 hp, two stroke
- Niro davits
- Spares: Dingi repair kit, spark plugs

Anchoring equipment

- **Primary Anchor:** 35 kg CQR anchor, 50 m, 10 mm anchor chain plus 20 m anchor rope for extension, extra chain to attach secondary anchor to primary chain
- **Secondary Anchor:** 16 kg Delta anchor, 20 m, 8 mm anchor chain (new 2017)
- Sea Anchor (new 2015, never used)



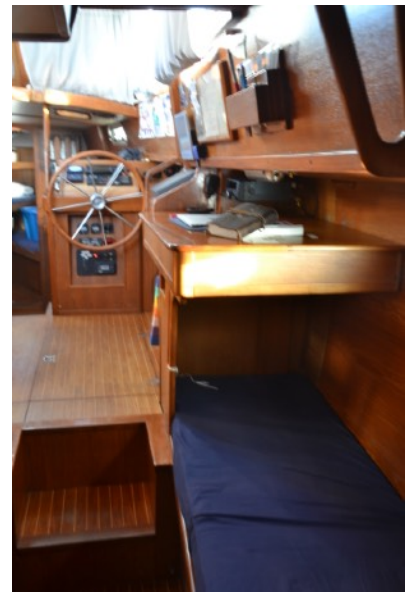
- Strong electric Simpson Lawrence Anchorman Power Windlass
- Strong bearings for safe anchoring in heavy winds

Gas system

- 2 propane 5kg gas bottles including adapters (stored in the anchor box)
- Liquid pressurised gas (LPG) including remote magnetic valve
- Copper tubes connecting bottles and pantry

Navigation

- Raymarine ST7000 electrical autopilot
- Windpilot Pacific wind vane (new 2015)
- Raymarine Log, wind meter, Heading ST50 (installed in the cockpit)
- Northstar echo D310 (installed in the cockpit)
- Raymarine VMG, Multi, Heading ST50 (installed inside)
- Forward looking sonar Echopilot
- Silva compass
- Furuno GP32 GPS
- Garmin portable GPS
- Raytheon Radar R11xx
- Raspberry Pi board computer (new 2015)
- C-map charts worldwide (status 2006), Open CPN
- Weatherdock AIS easyTRX-IS-WiFi system including wifi and secondary independent GPS (new 2015)
- Weatherdock watch box, collision warning (new 2015)
- Navtex Fastnet radio, Marine decoder
- Barometer, Thermometer, Hydrometer
- Wempe Meteograph



- Davis Mark25 Sextant (new 2017)
- Navigation Table
- Curtesy flags for 20+ countries plus full flag alphabet
- Radar reflector and mooring ball
- Binoculars
- Spares: Raspberry Pi spare computer, autopilot spares



Communication

- Sailor A1 VHF radio
- Handheld VHF radio (new 2017)
- Alphatec Wifi repeater including 90 cm wifi antenna and router (new 2015)
- Yeasu SSB radio FT450D, including SSB antenna and tuner Yaesu FC40 and MicroHam Interface USB iii (new 2015)
- Inmarsat Isatphone 2 (new 2017)

Safety

- EPRIB ocean signal (new 2015)
- 4 Weatherdock easyOne MOB AIS transponder (new 2015)
- self inflating life jackets for adults
- solid life jackets for children (new 2015)
- Lifelines (partially new 2015)
- Lifesling
- Horseshoe Lifering
- Buoy with light

- Emergency bag
- Flares (partially new 2017)
- 3 fire extinguishers
- First Aid medical kit & extensive board pharmacy (partially new 2015-17)
- Plastimo, Transocean Lifteraft, 6 Persons (new 2015)
- Safety netting, new 2015
- Spares: cartridges for life jackets

Power management

- 12V based board system with several outlets plus 220V outlets for land supply
- 2 control panels for power management
- Ampmeter and Ah-Meter for monitoring of power consumption
- 170 Watt installed solar panels (new 2015)
- Silent Wind generator 400 plus (new 2015)
- 2 alternators 50A (engine and service)
- LEAB current distributor
- Charge controller for batteries
- Charging controller for wind and solar power (new 2015)
- Engine battery 135 Ah
- 3 Trojan AGM Service batteries 3 x 89 Ah (new 2018)
- 220V / 250W Inverter
- 110V / 1600W Inverter (new 2018)
- 110V / 220W Transformer (new 2018)
- Navigation lights and majority of interior lights LED
- 50 m cable and various adaptors for power supply from land
- Spares: switches, bulbs, batteries, cables



Engine & Fuel

- Ford 2722 C-Power Marine Engine (marinized industry engine), fully insulated and easy accessible from engine room and deck saloon (major inspection 2017: heat exchanger, impeller, v/belt, thermostat)
- 66 kw, 90 PS
- Engine hours: 4500 hr, life expectancy: 15000 hr
- 750 liter keel diesel tank
- 40 liter day diesel tank, gravity flow to engine
- 2 independent fuel pumps constantly circulating and filtering fuel from keel tank to day tank preventing diesel pests for maximum engine reliability
- additional SEPAR filter between day diesel tank and engine
- Spares: 1 fuel pump, oil filters, fuel filters, v-belts, impellers, thermostat



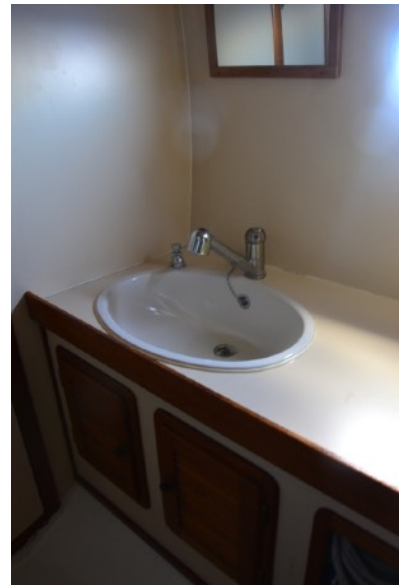
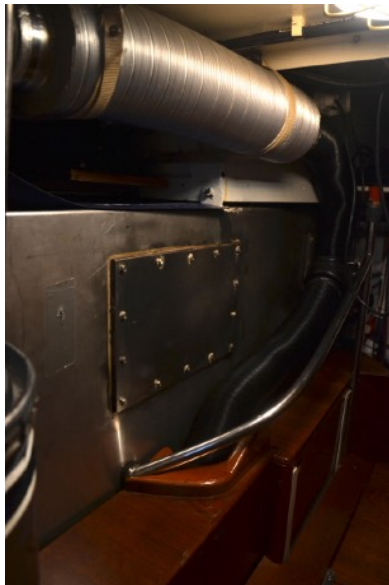
Heating

- Eberspaecher Airtronic diesel heater, outlets in each cabin plus heated locker
- Secondary Heating using engine heat

Water

- 12 separable Niro Water Tanks 2 x 280 liter, inside accessible
- 50 liter water heater (engine heat or 220 V power)
- 175 liter holding tank, gravity flow, including monitoring system
- In each bathroom: tap and basin and a fresh water vacuum toilet
- Watermaker ECH2OTec 260 DML 1; 60 liter/h including remineralisation and possibility for bottle filling (new 2017)
- pressurized fresh water system





- 2 electric bilge pumps (one new 2017)
- Shower in masters bathroom and usage in cockpit (electric drainage new 2015)
- Hose and adaptors for land water supply, jerry cans
- Spares: toilet spares, hose, gaskets, filters & maintenance kit for watermaker, manual bilge pump

Pantry

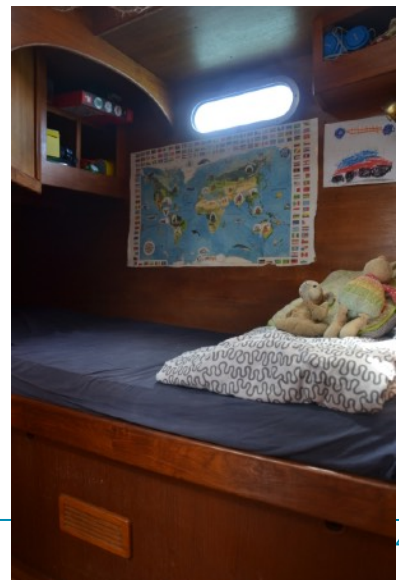
- ENO 2 flame stove plus oven
- 70 liter top loading fridge
- Tap (new 2017) and 2 niro water basins
- Pressure cooker, pan and pots (partially new 2015)
- Glases, Cups and dishes (new 2015)
- Silverware, baking & cooking equipment (partially new 2015)
- Lots of storage especially in bilge



Deck saloon, Cabins & Storage



- Many windows for good visibility and daylight especially in deck saloon
- Teak based interior
- Teak floors
- Lots of storage especially in engine room and beneath deck saloon. Additional storage below beds and sofa and in lockers
- Large heatable wardrobe
- Adjustable teak eating table
- Sofa (cushions new 2010) and 2 removable bar chairs
- Radio, speakers in and outside
- Bibliography incl. cruising guides and nautical literature
- Mosquito nets (new 2015-18)
- Blankets and sheets (new 2015)





Tools & Spares

- Antifouling painting & anodes
- Paintings
- Large assortment of tools such as grinders, drills, Fein Multitool, Disc grinder...
- Assortment of electronic tools
- Assortment of mechanic tools
- Assortment of screws
- Many spares available on board

Misc

- Snorkeling gear (new 2015-18)
- Stand up paddle board (new 2017)
- Fishing equipment (new 2015-18)
- Portable vacuum cleaner
- Manual washing machine (new 2015)