
Expose Moya

Motiva 39 S decksalon and live-a-board Yacht
Well equipped & ready to go for Circumnavigation



Key Features

- Very strong and secure steel yacht
- Center cockpit Slup with many safety features
- Well equipped for bluewater sailing or circumnavigation
- Proofed herself vital in whole gale force winds and crossing several oceans
- Equipped for months of self sustainable cruising
- Well designed for living on board, decksalon yacht
- Strong marinized industry engine with well designed fueling system
- Lots of storage
- Ready to go for voyaging

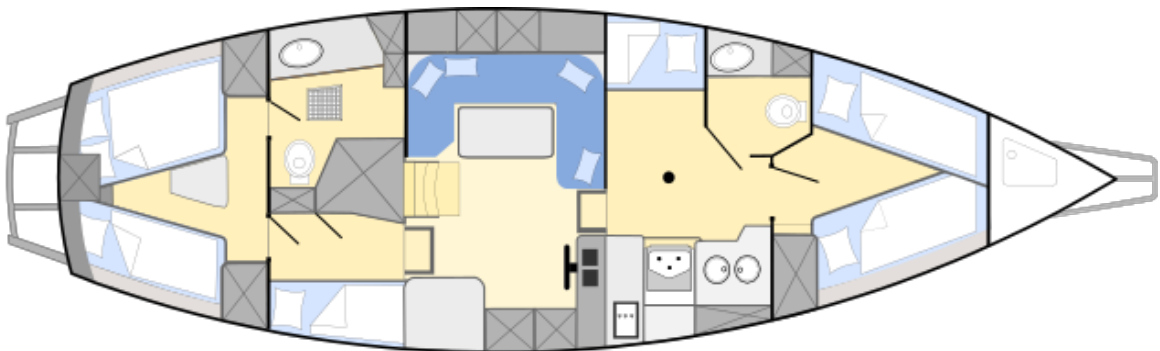


Boatdesign

- Slup, centre cockpit
- Steel hull fully insulated
- Strong rigging
- Long keel, rudder protected by skeg
- Length overall: 13m
- Length over deck: 12m



- Breadth: 3.9m
- Draft: 1.9m
- Tonnage: 19t
- 2 cabins, deck salon, pantry, engine room (below deck salon) and 2 bathrooms
- 6 berths, 2 in the masters cabin, 2 in the front cabin and 1 besides navigation for watches, 1 on the way to the front cabin
- 2 helms enabling steering from inside and outside
- Lots of storage in lockers, below sofa and beds including a heated locker plus huge storage in the bilge and engine room



Boat history

- **Boatyard - Motiva** (Denmark), interior owner designed and built. Construction and all on board systems are well documented

- **Launched 1994** in Germany
- **Major refit in 2011**
 - Genoa new
 - Main Sail new
 - Hull painting new
 - Upholstery Salon new
- Sold 2014 in Germany from first owner



- **Major refit 2015-2017:** Rigging & Bluewater equipment for a total value of more than 30 000€ installed:

- Stays and shrouds replaced, all new 2015
- Mast steps, new 2015
- Sheets & mooring lines, new 2015
- Watermaker, new 2017
- AIS transponder & AIS watchbox, new 2015
- SSB radio, new 2015
- Solar panels, new 2015
- Wind generator, new 2015
- AIS man over board system, new 2015
- Sat phone, new 2017
- Life raft, new 2015

-
- Wifi antenna and WLAN on board system, new 2015
 - Wind vane, new 2015
 - Bord computer, new 2015
 - Delta anchor, new 2017
 - Binimi Top, new 2017
 - Bathing ladder, new 2017
 - Safety netting, new 2015
 - Standup Paddle Board, new 2017
 - Sextant, new 2017
 - EPRIB, new 2015
 - Major Engine inspection 2017
 - **Live-a-board yacht since September 2017**
 - **Additional items installed while traveling:**
 - Antifouling new 2018
 - Service batteries new 2018
 - Cockpit cushions, new 2018
 - UV protection genoa new 2018
 - Inverter and transformer, new 2018
 - VHF radio, new 2019
 - Antenna splitter, new 2019
 - JVC hifi sound system, new 2019
 - **Travel history:** Baltic Sea, Northern Sea, North Atlantic Ocean, Atlantic Crossing, Caribbean Sea, Pacific Crossing, North Pacific Ocean, South Pacific Ocean, Coral Sea, Arafura Sea, South China Sea, Indian Ocean, Arabic Sea, Red Sea
 - **Current location:** Sailing to the Mediterranean

Rigging & mast installations



- Strong aluminium Mast, 16m height, fully accessible
- Mast steps (new 2015)
- 2 backstays 8mm each (new 2015)
- Shrouds 8 mm each (new 2015)
- Forestay 10mm (new 2015) and cutter stay
- 3 self tailing winches at the mast
- 4 strong self tailing winches in the cockpit (Enkes ASC28)
- 4 rigged halyards
- Solid aluminium rod kicker
- Aluminium boom
- 2 spinnaker poles (one telescope, one fixed)
- LED Navigation lights plus stroke in the mast top
- Electric signal horn installed at the mast, remote controlled
- Manual windex in the masttop (new 2015)
- VHF & AIS antenna in the masttop

Sails



- Mainsail, battened, 3 reefs, 40qm, heavy cloth (new 2011)
- Lazy jacks (new 2018)
- Mainsail cover
- Mainsheet and traveller at the backside of the cockpit
- Roller furled for genoa, 58qm, heavy cloth (new 2011, UV protection new 2018)
- Jib, 29 qm
- Stormjib, 8 qm (never

used)

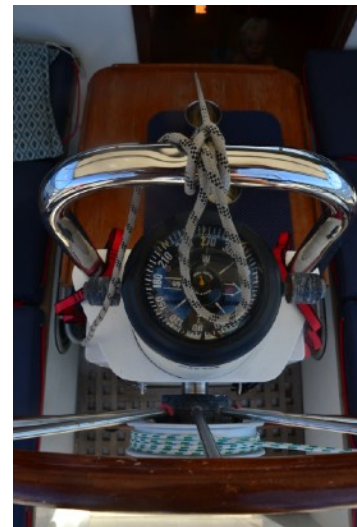
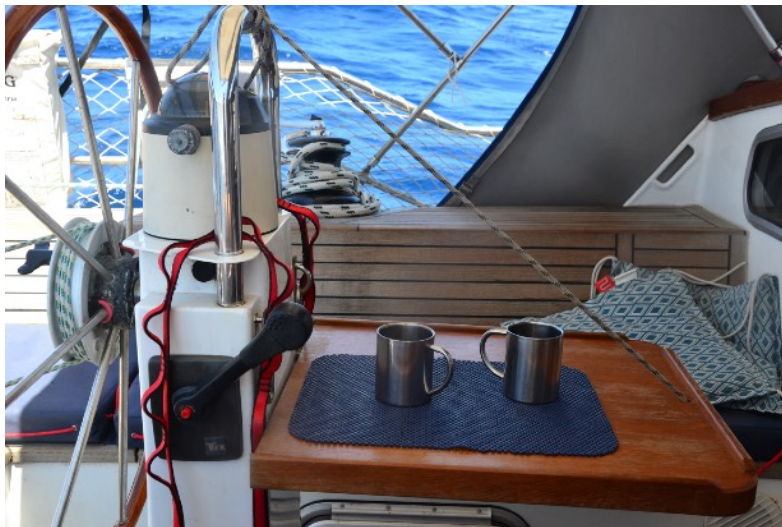
- Cruising chute, 96 qm

- whole ship cover for winter storage
- sun sail for boom rigging
- Spares: Full length longest stay including terminals, several spare halyards and sheets (all new), blocks, toggles, pins ...

Deck installations



- Steel deck with anti slippery patches
- 4 welded bitts
- Several strong cleats
- Solid welded sea fence
- Safety netting (new 2015)
- 2 fender balls, 6 fenders, 1 fender step (2 new 2015)
- Bathing platform with 3 step telescope niro ladder (new 2017) at the stern
- Fishing rot holder (new 2017)
- Sprayhood (re-worked 2018)
- Bimini Top (new 2017)
- portable pump for deck cleaning (new 2017)
- small removable cockpit table
- Teak cockpit
- Cockpit cushions (new 2018)



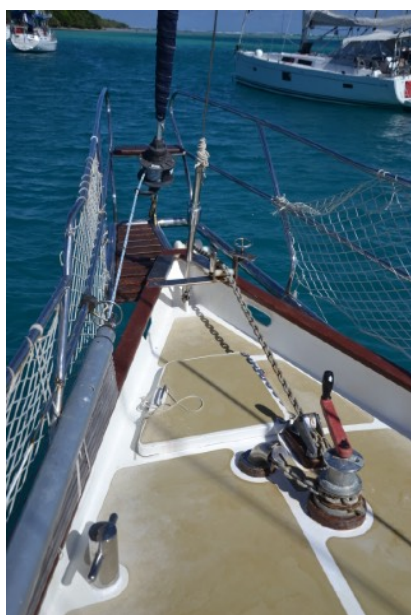
Dingy

- Zodiac Dingy, anchor & oars
- Yamaha Malta outboard engine 2.5 hp, two stroke
- Niro davits
- Spares: Dingi repair kit, spark plugs

Gas system

- 2 propane 5kg gas bottles including adapters (stored in the anchor box)
- Liquid pressurised gas (LPG) including remote magnetic valve
- Copper tubes connecting bottles and pantry

Anchoring equipment



- **Primary Anchor:** 35 kg CQR anchor, 50 m, 10 mm anchor chain plus 20 m anchor rope for extension, extra chain to attach secondary anchor to primary chain
- **Secondary Anchor:** 16 kg Delta anchor, 20 m, 8 mm anchor chain (new 2017)
- Sea Anchor (new 2015, never used)
- Strong electric Simpson Lawrence Anchorman Power Windlass
- Strong bearings for safe anchoring in heavy winds

Navigation



- Raymarine ST7000 electrical autopilot
- Windpilot Pacific wind vane (new 2015)
- Raymarine Log, wind meter, Heading ST50 (installed in the cockpit)
- Northstar echo D310 (installed in the cockpit)
- Raymarine VMG, Multi, Heading ST50 (installed inside)
-
- Forward looking sonar Echopilot
- Silva compass
- Furuno GP32 GPS
- Garmin portable GPS
- Raytheon Radar R11xx
- Raspberry Pi board computer (new 2015)

- C-map charts worldwide (status 2006), Open CPN
- Weatherdock AIS easyTRX-IS-WiFi system including wifi and secondary independent GPS (new 2015)
 - External antenna splitter from VHF-AIS (new 2019)
 - Weatherdock watch box, collision warning (new 2015)
 - Navtex Fastnet radio, Marine decoder
 - Barometer, Thermometer, Hydrometer
 - Wempe Meteograph
 - Davis Mark25 Sextant (new 2017)
 - Navigation Table
 - Curtesy flags for 20+ countries plus full flag alphabet
 - Radar reflector and mooring ball
 - Binoculars
 - Spares: Raspberry Pi spare computer, autopilot spares



Communication

- ICOM VHF radio (new 2019)
- Handheld VHF radio (new 2017)
- Alphatec Wifi repeater including 90 cm wifi antenna and router (new 2015)
- Yeasu SSB radio FT-450D, including SSB antenna and tuner Yaesu FC40 and MicroHam Interface USB iii (new 2015)
 - Inmarsat Isatphone 2 (new 2017)

Safety

- EPRIB ocean signal (new 2015)
- 4 Weatherdock easyOne MOB AIS transponder (new 2015)
- self inflating life jackets for adults
- solid life jackets for children (new 2015)
- Lifelines (partially new 2015)
- Lifesling
- Horseshoe Lifering
- Buoy with light
- Emergency bag
- Flares (partially new 2017)
- 3 fire extinguishers
- First Aid medical kit & extensive board pharmacy (partially new 2015-17)
- Plastimo, Transocean Liferaft, 6 Persons (new 2015)
- Safety netting, new 2015
- Spares: cartridges for life jackets

Electricity



- 12V based board system with several outlets plus 220V outlets for land supply
- 2 control panels for power management
- Ampmeter and Ah-Meter for monitoring of power consumption
- 170 Watt installed solar panels (new 2015)
- Silent Wind generator 400 plus (new 2015)
- 2 alternators 50A (engine and service)
- LEAB current distributor
- Charge controller for batteries
- Charging controller for wind and solar power (new 2015)

- Engine battery 135 Ah
- 3 Trojan AGM Service batteries 3 x 89 Ah (new 2018)
- 220V / 250W Inverter
- 110V / 1600W Inverter (new 2018)
- 110V / 220W Transformer (new 2018)
- Navigation lights and majority of interior lights LED
- 50m cable and various adaptors for power supply from land
- Spares: switches, bulbs, batteries, cables

Engine & Fuel



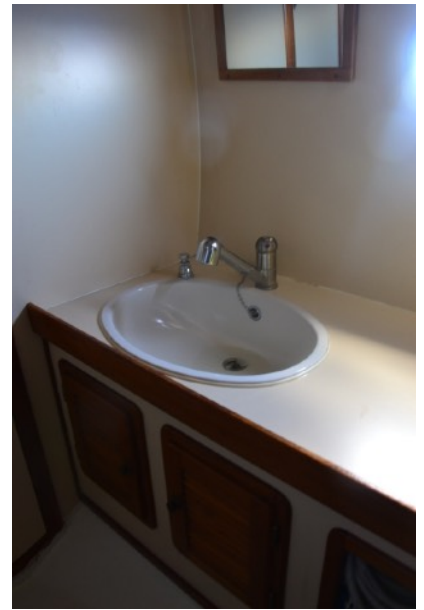
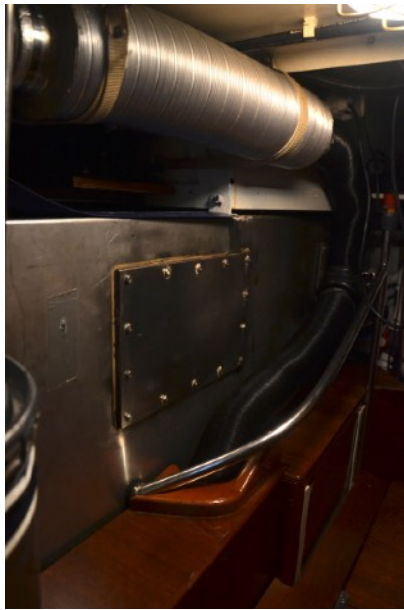
- Ford 2722 C-Power Marine Engine (marinized industry engine), fully insulated and easy accessible from engine room and decksalon (major inspection 2017 (heat exchanger, impeller, v/belt, thermostat))
- 66 kw, 90 PS
- Engine hours: 4500 hr, life expectancy: 15000hr
- 750 Liter keel diesel tank
- 40 Liter day diesel tank, gravity flow to engine
- 2 independent fuel pumps (one new 2019) constantly circulating and filtering fuel from keel tank to day tank preventing diesel pests for maximum engine reliability
- additional SEPAR filter between day diesel tank and engine
- Spares: 1 fuel pump, oil filters, fuel filters, v-belts, impellers, thermostat

Heating

- Eberspaecher Airtronic diesel heater, outlets in each cabin plus heated locker
- Secondary Heating using engine heat

Water

- 2 separable Niro Water Tanks 2 x 280 Liter, inside accessible
- 50 Liter water heater (engine heat or 220V power)



- 175 Liter holding tank, gravity flow, including monitoring system
- In each bathroom: tap and basin and a fresh water vacuum toilet
- Watermaker ECH2OTec 260 DML 1; 60 Liter /h including remineralisation and possibility for bottle filling (new 2017)
 - pressurized fresh water system
 - 2 electric bilge pumps (one new 2017)
 - Shower in masters bathroom and usage in cockpit (electric drainage new 2015)
 - Hose and adaptors for land water supply, jerry cans
 - Spares: toilet spares, hose, gaskets, filters & maintenance kit for watermaker, manual bilge pump



Pantry

- ENO 2 flame stove plus oven
- 70 Liter top loading fridge
- Tap (new 2017) and 2 niro water basins
- Pressure cooker, pan and pots (partially new 2015)
- Glasses, Cups and dishes (new 2015)
- Silverware, baking & cooking equipment (partially new 2015)
- Lots of storage especially in bilge



Decksalon, Cabins & Storage

- Many windows for good visibility and daylight especially in decksalon
- Teak based interior
- Teak floors
- Lots of storage especially in engine room and beneath deck salon. Additional storage below beds and sofa and in lockers
- Large heatable wardrobe
- Adjustable teak eating table
- Sofa (cushions new 2010) and 2 removable bar chairs
- JVC Radio (new 2019), speakers in and outside
- Bibliography incl. cruising guides and nautical literature
- Mosquito nets (new 2015-18)
- Blankets and sheets (new 2015)





-

Tools & Spares

- Antifouling painting & anodes
- Paintings
- Large assortment of tools such as grinders, drills, Fein Multitool, Disc grinder...
- Assortment of electronic tools
- Assortment of mechanic tools
- Assortment of screws
- Many spares available on board

Misc

- Snorkeling gear (new 2015-18)
- Stand up paddle board (new 2017)
- Fishing equipment (new 2015-18)
- Portable vacuum cleaner
- Manual washing machine (new 2015)

